



**BOUNDARIES**

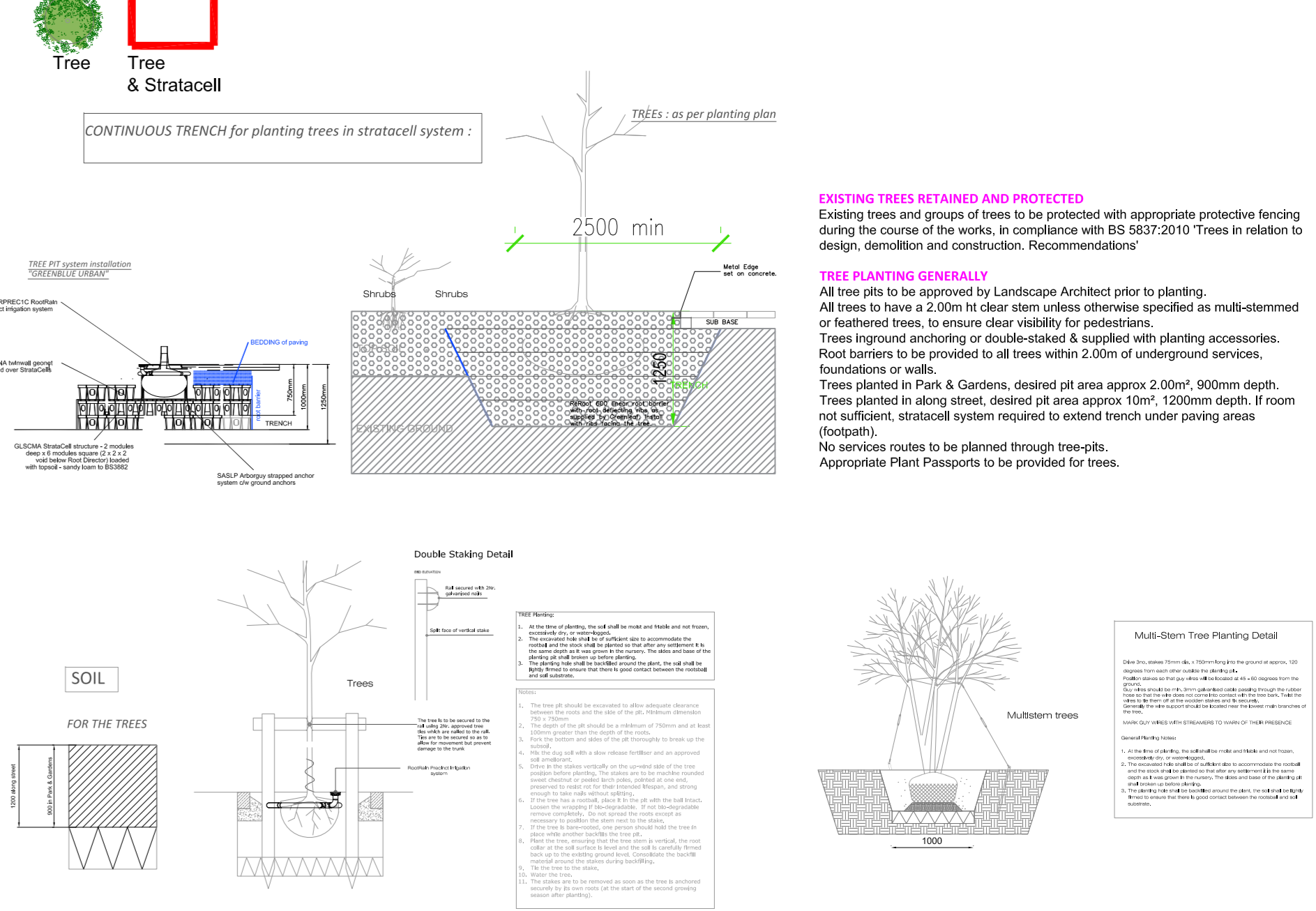
- Application Site Area - Red Line (13.3ha)
- Lands in the Applicants Control
- Extent of Work in Local Authority Control
- Educational Zoning in Celbridge LAP Land Use Zoning Map
- Flood risk
- AA1 Archaeology Exclusion Area

Site Address: Lands at Ballyouster, Celbridge, Co. Kildare	Drawing: PLANTING PROPOSAL	Drawing Number: KDA - 04B	Scale: 1 to 600
Applicant Name: Kieron Curtin, Receiver over certain assets of Maplewood Developments Unlimited Company (in liquidation and in receivership)	Date: 06/2022	Bernard Seymour Landscape Architects 14 Main Valley, Dussart +353 330 212124 info@bernard.com	
Project Title: Ballyouster SHD (Phase 1)			

**PLANTING**

- EXISTING TREES & HEDGEROWS**  
Refer to plan K02A04 - Planting Existing
- Existing Trees
  - Existing Hedgerows
  - Proposed Trees
  - Proposed Mix Hedgerows
  - Multistem / bushes
  - Shrubs
  - Mix Evergreen Hedges & Shrubs
  - Grass & Accentuation flowers
  - Mix ground covers
  - Meadow grass
  - Meadow grass Accentuation flowers & butts
  - Meadow grass Attenuation pond
  - Meadow grass Existing
  - Boulders Mix SIZES

**PLANTING TREES**



**TREES along the boulevard**

(PLA) Platanus orientalis Min. 25-30 cm girth, min. overall ht. 4.0-5.0 m.

**TREES in the residential streets**

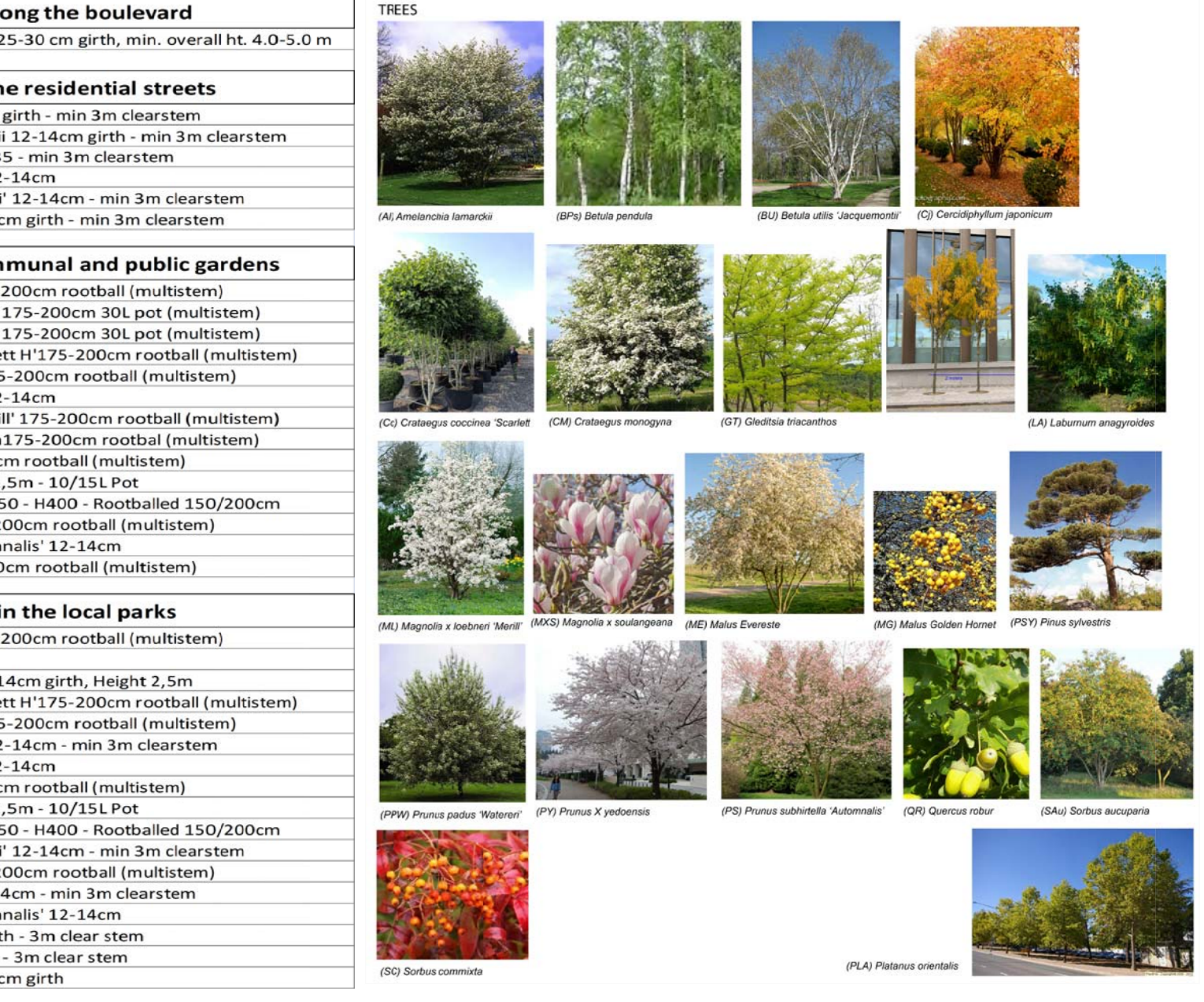
- (BPA) Betula pendula 12-14cm girth - min 3m clearstem
- (BBA) Betula utilis jacquemontii 12-14cm girth - min 3m clearstem
- (C) Crataegus coccinea 12-14cm girth - min 3m clearstem
- (LAI) Laburnum anagyroides 12-14cm girth - min 3m clearstem
- (PPW) Prunus padus 'Watereri' 12-14cm - min 3m clearstem
- (SAU) Sorbus aucuparia 12-14cm girth - min 3m clearstem

**TREES in the communal and public gardens**

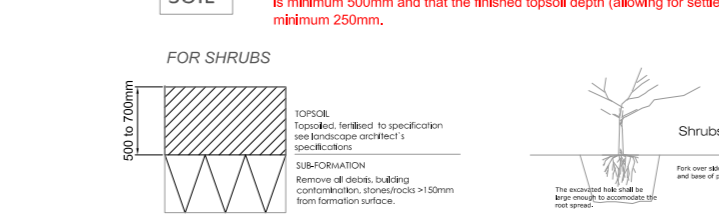
- (AB) Amelanchier lamarckii 175-200cm rootball (multistem)
- (BJ) Betula utilis jacquemontii 175-200cm 30L pot (multistem)
- (C) Crataegus coccinea 'Scarlet' 175-200cm 30L pot (multistem)
- (C) Crataegus coccinea 'Scarlet' 175-200cm rootball (multistem)
- (CM) Crataegus monogyna 175-200cm rootball (multistem)
- (LAI) Laburnum anagyroides 12-14cm
- (ML) Magnolia kobur 'Merrill' 175-200cm rootball (multistem)
- (MMS) Magnolia soulangiana 175-200cm rootball (multistem)
- (ME) Malus Evereste 175-200cm rootball (multistem)
- (MG) Malus Golden Hornet H2, 5m - 10/13L Pot
- (PSY) Pinus sylvestris A/150/250 - H400 - Rootballed 150/200cm
- (PY) Prunus X yedoensis 175-200cm rootball (multistem)
- (PS) Prunus subhirtella 'Autumnalis' 12-14cm
- (Q) Quercus robur 12-14 gth - 3m clear stem
- (SAU) Sorbus aucuparia 12-14cm girth

**TREES in the local parks**

- (AB) Amelanchier lamarckii 175-200cm rootball (multistem)
- Betula pendula & pubescens
- Mixture of light standards 12-14cm girth, height 2.5m
- (C) Crataegus coccinea 'Scarlet' 175-200cm rootball (multistem)
- (CM) Crataegus monogyna 175-200cm rootball (multistem)
- (LAI) Laburnum anagyroides 12-14cm
- (MG) Malus Evereste 175-200cm rootball (multistem)
- (MGS) Malus Golden Hornet H2, 5m - 10/13L Pot
- (PSY) Pinus sylvestris A/150/250 - H400 - Rootballed 150/200cm
- (PPW) Prunus padus 'Watereri' 12-14cm - min 3m clearstem
- (PY) Prunus X yedoensis 175-200cm rootball (multistem)
- (PS) Prunus subhirtella 'Autumnalis' 12-14cm
- (Q) Quercus petraea 12-14 gth - 3m clear stem
- (QR) Quercus robur 12-14 gth - 3m clear stem
- (SAU) Sorbus aucuparia 12-14cm girth

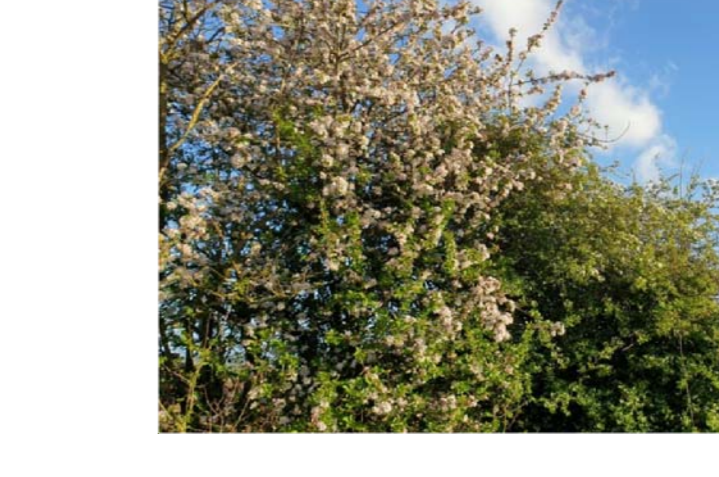


**PLANTING BUSHES & SHRUBS**

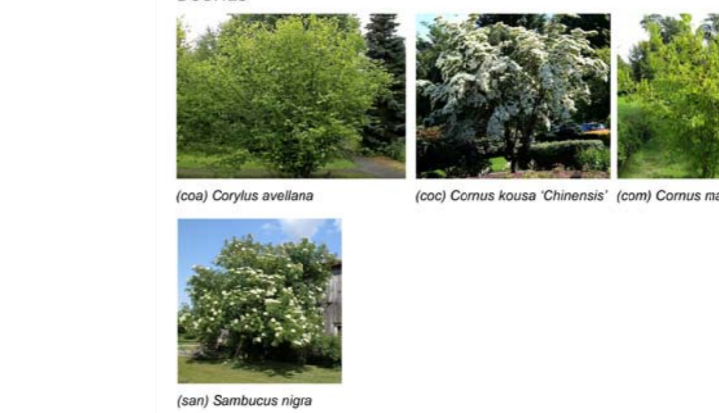


**RECOMMENDED NATURAL VEGETATION IN RESIDENTIAL ZONES**

Species such as Hawthorn, Hazel, Elder, Birch, Cherry, Blackthorn, Crab Apple, Wildflower, Tree, Holly, Elder, Blackthorn, Transparientwinged, Brambling, and others that flourish naturally along the hedgerows, roadsides and 'wild' hedgerows, hedgerows and local green spaces and Farm Made Acre composite and Spruce (Eucalyptus europaeus) added for wildlife benefits. Plant in staggered rows, 4 hedgerow boundaries per ha, 1 no. clearing plant per 0.5m length hedgerows, by Dog Flies, Bark mulch at base with protective chemical gate fencing.



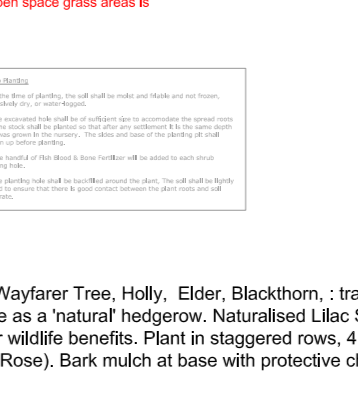
**BUSHES proposed in gardens and communal open spaces**



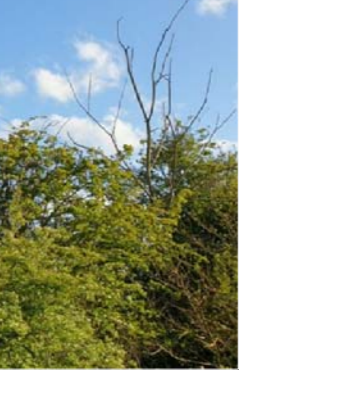
**RECOMMENDED HEDGES proposed around the houses**



**SHRUBS proposed in the gardens or strategic location**



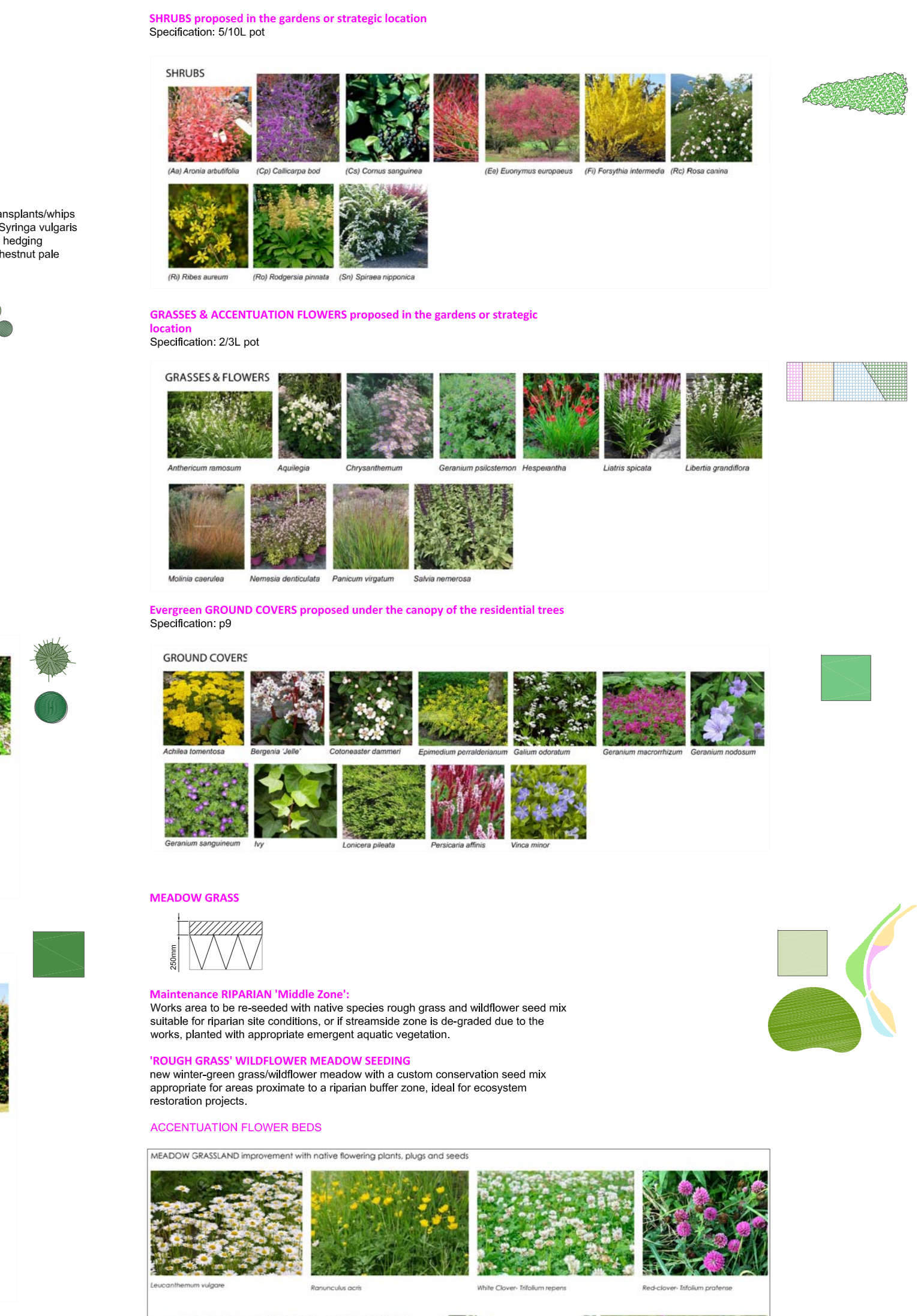
**GRASSES & ACCENTUATION FLOWERS proposed in the gardens or strategic location**



**GRASSES & ACCENTUATION FLOWERS proposed under the canopy of the residential trees**



**MEADOW GRASS**



**Maintainance RIPARIAN 'Wild Zone'**  
Wild Zone areas to be maintained with native species rough grass and willow sward mix suitable for riparian site conditions, or if appropriate zone is designated due to the works, planted with appropriate riparian species vegetation.

**'WILD ZONE' GRASS: WILD ZONE MEADOW SEEDING**  
New native grassland flower meadow with a custom conservation seed mix appropriate for areas prone to be a species buffer zone. Ideal for ecosystem restoration projects.

**ACCENTUATION FLOWER BEDS**  
WILLOW GRASSLAND (conservation of native flowering grass, sedge and fern)

**METHOD 1:** Plug plants in 10cm pots  
**METHOD 2:** Clear areas of bare earth by turning over sward mix with a fork  
**METHOD 3:** Clear areas of bare earth by turning over sward mix with a fork